



USB to Parallel Bi-Directional Cable

User's Manual



Safety Instructions

Always read the safety instructions carefully

- Keep this User Manual for future reference
- Keep this equipment away from humidity
- If any of the following situations arise, get the equipment checked by a service technician:
 - The equipment has been exposed to moisture.
 - The equipment has been dropped and damaged.
 - The equipment has obvious sign of breakage.
 - The equipment has not been working well or you cannot get it to work according to the User Manual.

Copyright Statement

No part of this publication may be reproduced in any form by any means without prior written permission. Other trademarks or brand names mentioned herein are trademarks or registered trademarks of their respective companies.

Disclaimer

Information in this document is subject to change without notice. The manufacturer does not make any representations or warranties (implied or otherwise) regarding the accuracy and completeness of this document and shall in no event be liable for any loss of profit or any commercial damage, including but not limited to special, incidental, consequential, or other damage.

Table of Contents

Overview	1
Package Checklist.....	1
Features	1
System Requirements.....	1
Setting Up the Printer Device.....	2
For an Installed Printer.....	2
For a New Printer.....	2
Specifications.....	3
Regulatory Compliance	4
FCC Conditions.....	4
CE.....	4
WEEE Information	4

Overview

The USB to Parallel Bi-Directional Cable allows your PC to print to most parallel printer devices connected through the USB port. Just plug the USB connector of the cable into the USB port of your PC and the other end into the Centronics connector of the parallel printer and it's ready to use. Plus, the device's USB connector of the parallel printer and it's ready to use. Plus, the device's USB interface provides up to 12Mbps data throughput, so printing is much faster compared with standard parallel port (150kbs) connection. The USB to Parallel cable also features bi-directional communication, allowing the computer to correctly retrieve the message reported from the printer.

Package Checklist

The USB Bi-directional printer cable product package includes the following items:

- USB to Parallel Bi-Directional Cable
- User Manual

Features

- Connects to Parallel printer through a USB port on your PC
- Plug & Play; connection in seconds
- Draws its power from the USB interface, no power adapter required
- USB specification revision 1.1 compliant
- USB Printer Class Specification 1.0 compliant`
- IEEE-1284 1994 (Bi-directional parallel interface) specification compliant

System Requirements

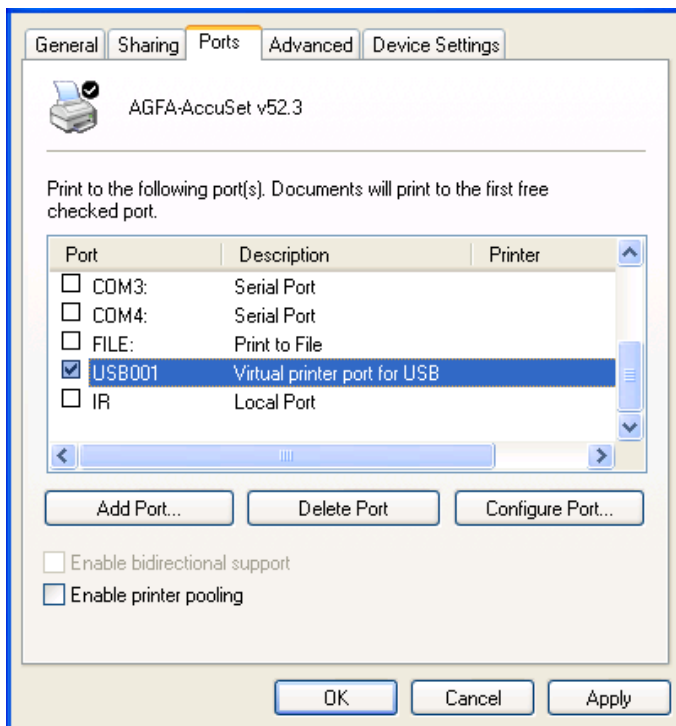
- Intel-compatible 486DX-66 MHz CPU or higher
- One Standard USB Port
- Windows® XP ,Windows® Vista, Windows® 7, Windows® 8 and Windows® 8.1

Setting Up the Printer Device

Follow the steps below to configure your printer to the USB to Parallel Bi-Directional Cable for communication with your computer.

For an Installed Printer

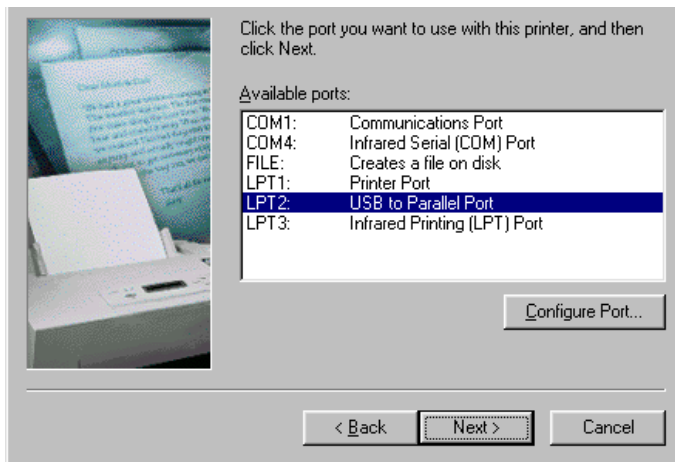
1. If you have already installed a printer device before, click **Start > Settings > Printers (and Faxes)**. Right-click the printer that is connected using your parallel cable and click on **Properties**. The **Properties** dialog box of the installed printer will appear on your screen.
2. Click the **Ports** or **Details** tab and change the printer port to **LPT2: (USB to Parallel Port)** or **USB001 (Virtual Printer port for USB)**.



For a New Printer

1. If you do not have a printer installed yet, click on **Start > Settings > Printers (and Faxes) > Add a printer**. The **Add Printer Wizard** will start and assist you in installing a new printer device. Follow the on-screen prompts to proceed.

- When prompted which port the printer will use, click **LPT2: (USB to Parallel Port)** or **USB001 (Virtual Printer port for USB)**.



- Follow the succeeding instructions to complete the installation and also run **Print Test Page** to see if it can print without problems.

Specifications

Items	Descriptions
PC Interface	USB 1.1 compliant A type male connector
Parallel Connector	IEEE 1284 bi-directional DB25/36 female connector
Specification Support	USB Printer Class Specification 1.0 compliant IEEE-1284 1994 (bi-directional parallel interface) specification compliant
Buffer Size	Unified 512-byte buffer Dynamically allocated for upstream and downstream data flow
Total Length	2M
Input Pins Voltage Level	5V tolerant
Regulations	CE, FCC

**Specifications are subject to change without prior notices.*

Regulatory Compliance

FCC Conditions

This equipment has been tested and found to comply with Part 15 of the FCC Rules. Operation is subject to the following two conditions:

- (1) This device may not cause harmful interference
- (2) This device must accept any interference received, including interference that may cause undesired operation.

CE

This equipment is in compliance with the requirements of the following regulations:
EN 55 022: CLASS B

WEEE Information

For EU (European Union) member users:

According to the WEEE (Waste electrical and electronic equipment) Directive, do not dispose of this product as household waste or commercial waste. Waste electrical and electronic equipment should be appropriately collected and recycled as required by practices established for your country. For information on recycling of this product, please contact your local authorities, your household waste disposal service or the shop where you purchased the product.

