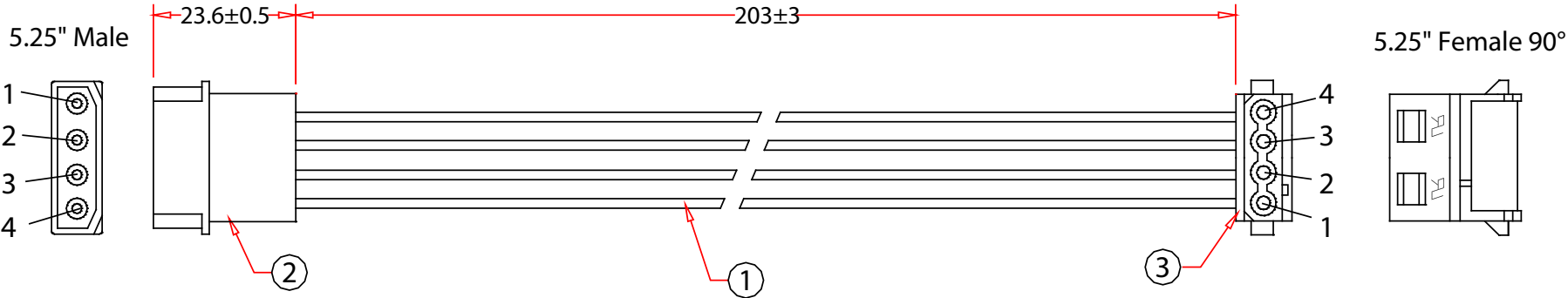


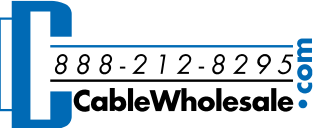
Rev.	Description	Date
A		02-2023



Pin Assignment		
P1		P2
1	Yellow	1
2	Black	2
3	Black	3
4	Red	4

RoHS

No.	Specifications
3	4Pin 5.25"Female, 90°, Pitch:5.08mm
2	4Pin 5.25" Male, Pitch:5.08mm,
1	UL1007 18AWG Wire, Length:225mm, Red 1 Pcs, Yellow 1 Pcs, Black 2 Pcs

Item Number:	11W3-04308	
Title:	5.25" Male / 5.25" Right-Angle Female Internal DC Power Cable, 8in	
Drawn by:	JL	
Approved by:	MAC	
ID:	1	