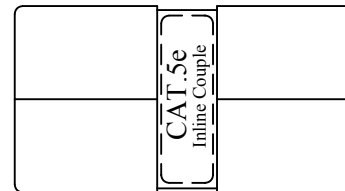
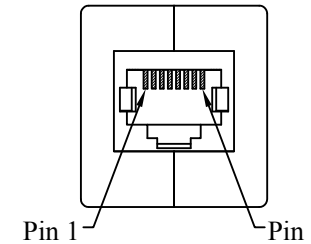
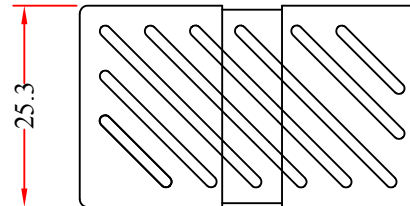
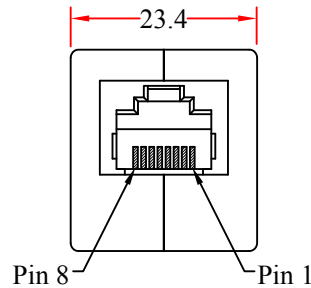
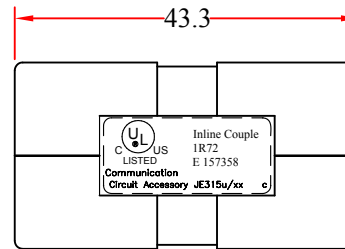
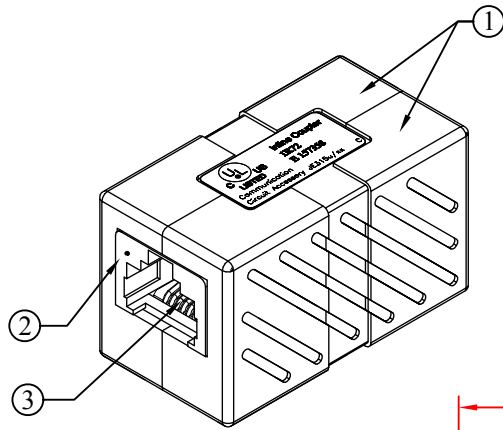


REV.	DESCRIPTION	DATE
A		04-2013

RoHS



Pin Assignment	
P1	P2
1	3
2	6
3	1
4	4
5	5
6	2
7	7
8	8

Performance:

1. The Sticker Color Codes Combine Two Wirings Of T568A & T568B.
2. Insertion Force: 900 gms For 8 Contacts.
3. Retention Strength: 7.7 kgs Between Jack And Plug.
4. Operation Temperature: -40°C To 80°C.
5. Durability:
Jack: 750 Cycles Plug- Jack Mating And Unmating Test, Insertion Cycles At 20 Cycles/ Minute Max. Resistance Test Per 100 Cycles.

NO.	SPECIFICATIONS
3	RJ45 8P8C Jack, Pin 50 micro-inch Cold Plated
2	RJ45 Housing, PBT / UL 94V-0
1	Plastic Hood, ABS / UL 94V-0
BOM LIST	

ITEM NUMBER	30X6-33400			DRAWER	JL
TITLE	Cat5e Crossover Coupler, White, RJ45 Female, Unshielded			CHECKED	
MATERIAL	SCALE			APPROVED	
REV.	A	UNIT	MM		
DRAWING NO:				 888-212-8295	