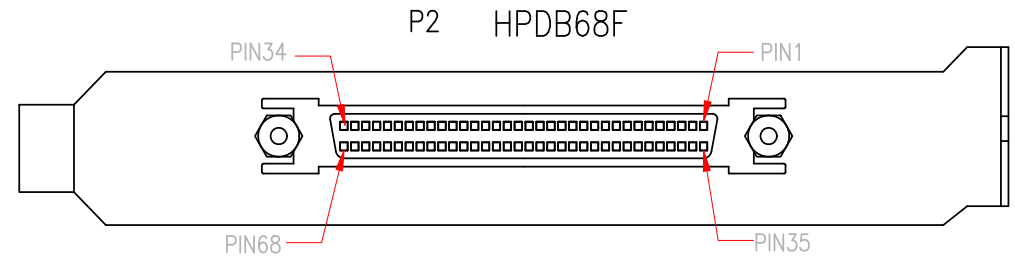
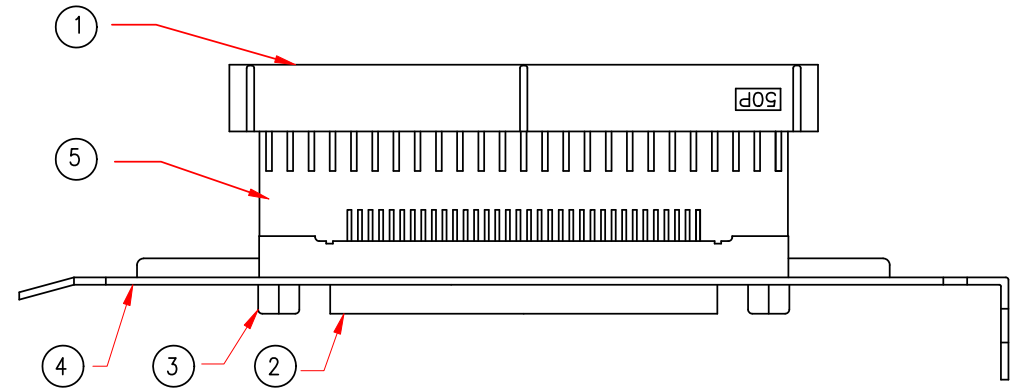
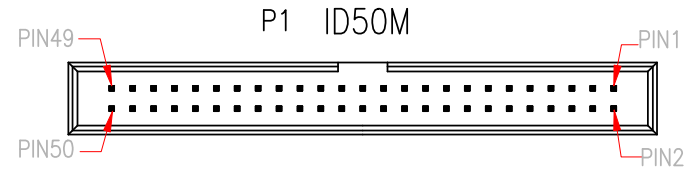


4274

P1	P2	P1	P2
1	6	27	19
2	40	28	53
3	7	29	20
4	41	30	54
5	8	31	21
6	42	32	55
7	9	33	22
8	43	34	56
9	10	35	23
10	44	36	57
11	11	37	24
12	45	38	58
13	12	39	25
14	46	40	59
15	13	41	26
16	47	42	60
17	14	43	27
18	48	44	61
19	15	45	28
20	49	46	62
21	16	47	29
22	50	48	63
24		49	30
26		50	64
	17		
	18		
	51		
	52		



*NOTE: All relevant materials are complied with RoHS directive .

5	PCB: MSL-28	A7AA27-0730	1	M730
4	BRACKET FOR HPDB 68 PIN	A6GD19-0901	1	M901
3	PLAIN SCREW #2-56	A6AA01-0095	2	M95
2	HPDB68 FEMALE, METAL SHIELD, WITH BRACKET, BLACK INSULATOR, PCB TYPE	A1GR04-0083	1	M83
1	IDC 50 MALE,WITH SOCKET, BLACK PLASTIC SHIELD, PCB TYPE	A1MR08-0922	1	M922

No.	DESCRIPTION		Q'TY	Supplier
APPROVED		 888-212-8295	Cable Length Unless Other Spec. Tolerances: 0 ~200mm ±10mm 201~1000mm ±20mm 1001 ~1500mm ±25mm 1501~2100mm ±30mm 2100mm↑ ±40mm	
CHECKED	HU			
DRAWING	LIU			
DATE	04/NOV/16		ITEM NO.	31P2-32300

REV.2 2016.11.04 MODIFY"NOTE"

REV.1 2001.06.29

CHECKED

DATE 04/NOV/16 ITEM NO.

31P2-32300

