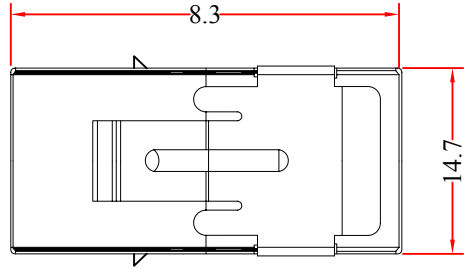
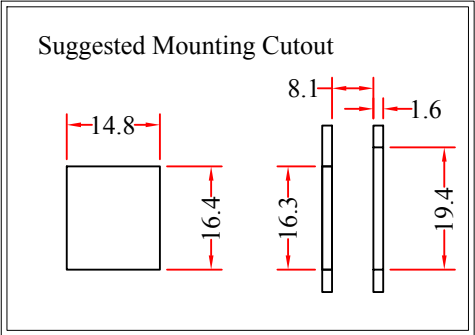


REV.	DESCRIPTION	DATE
A		08-2015



RoHS

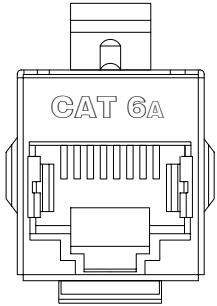
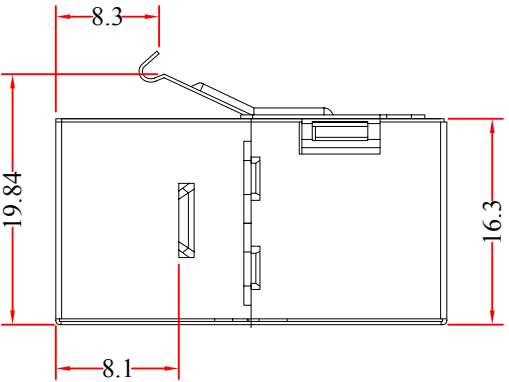
**Keystone Snap Coupler**

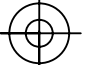
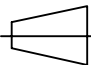
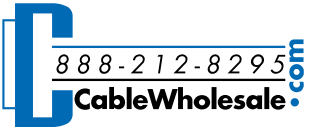
**Feature**

- \* Couple two patch cables or mount in keystone wall plates or patch panels.
- \* Exceed performance standard requirements.
- \* Feature two RJ-45 modular jacks.
- \* New press-fit technology with fully RoHS compliant. (No solder - No leads.)
- \* Fits wall plates, surface mount box & patch panels.
- \* Slim housing design enables High-Density mounting.
- \* Work with T568A & T568B wiring.

**Specifications**

- \* Coupler Housing: PC, UL94V-0
- \* Contact: Gold plated with 60U”Nickel undercoat
- \* PCB: FR-4, UL94V-0
- \* Insulation Resistance: 500M
- \* DC Current: 1.5amps
- \* Exceed Cat5e, Cat6 & Cat6A performance Standards.



ITEM NUMBER	326-52200		DRAWER	JL
TITLE	Shielded Snap-In Type Cat6 Keystone In-Line Coupler		CHECKED	
MATERIAL	SCALE		APPROVED	
REV.	A	UNIT	MM	 
DRAWING NO:				
ID(NO.)	56			