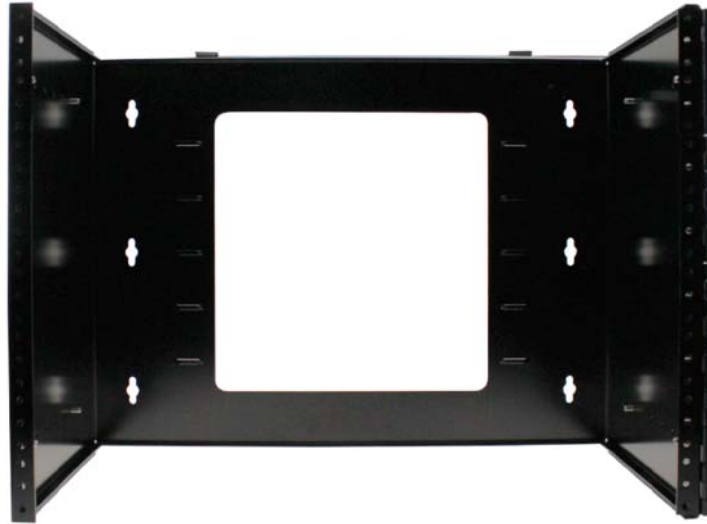


RoHS

REV.	DESCRIPTION	DATE
A		12-2017

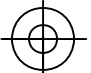
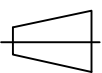
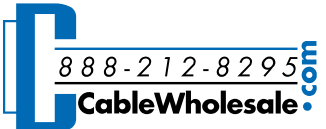


8U Swing Type Hinged Wall Mount Bracket, Extendable Depth

Rackmounts are manufactured to organize your network and/or professional computer system in a clean efficient manner, however if the number of rackmounts used are minimal, PI Manufacturing's hinged wall mount bracket may be the more optimal choice. These wall mounts are come in different sizes and are capable of mounting a number of panels. These particular wall mounts feature 8U in height, a swing type which uses a hinge on one side to provide access to the back of the panel without taking down the wall mount, and slide rails that allows for an extendable depth. With the use of these wallmounts, your networking system becomes more sophisticated and more organized.

Features

- Hinged Type
- Swing Type
- 8 Unit
- Extendable Depth
- Minimum depth: 9"
- Maximum depth: 14" (with two screws holding each side) ; 13.25" if secured with four screws on each side)

ITEM NUMBER	68BP-3008U			DRAWER	JL
TITLE	8U Swing Type Hinged Wall Mount Bracket, Extendable Depth			CHECKED	
				APPROVED	
MATERIAL		SCALE		 	
REV.	A	UNIT	INCH		
DRAWING NO:					
ID (NO.)	19				